

# CUTTER 112 EC™

Sineria

## Introduction :

CUTTER 112 EC™ is broad spectrum insecticide that targets aphids, *Helicoverpa sp.* as well as difficult to control leaf miners. CUTTER 112 EC™ provides a safe tool to suppress pest population, the product has a relatively safe toxicological profile and a favorable post harvest interval.

## Advantages :

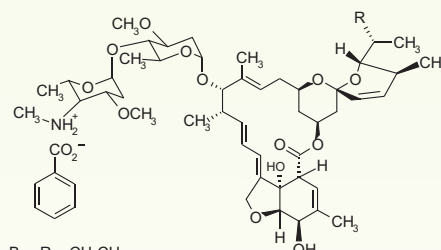
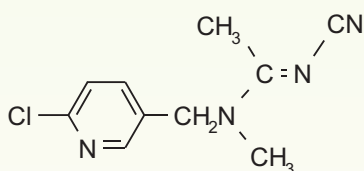
- Broad Spectrum Activity
- Suitable for various crops
- Low Toxicity effect
- Safe for crops if used as directed
- Safe for workers

**Mode of action :** Emamectin benzoate is non-systemic insecticide which penetrates leaf tissues by translaminar movement. Insecticide and acaricide with contact and stomach action. Has limited plant systemic activity, but exhibits translaminar movement. Acetamiprid is systemic insecticide with translaminar activity and with contact and stomach action. Both active ingredients have strong synergy.

## Chemical Profile :

**Common Name :** Emamectin benzoate, Acetamiprid

## Chemical Structure:



B<sub>1a</sub> R = CH<sub>2</sub>CH<sub>2</sub>-

B<sub>1b</sub> R = CH<sub>3</sub>-

**Sineria**  
SINERIA HOLLAND BV  
Randwycksingel 20-A015  
6229 EE Maastricht The Netherlands  
www.sineria.com

**Formulation Type:** EC

**Shelf life :** Two years after the date of manufacture, under normal conditions.

**Application :** Used by foliar spraying. It is important to spray evenly on the crops to get maximum control effects.

## RECOMMENDATION FOR USE

Crops	Pest	Rate L/ha in small volume spraying (300-700 L per Ha)	Last application before	Important comments
Cotton Wheat Maize	Heliothis Lapigma Leaf miners Thrips	250 ml/Ha	3 days	Timing is important. For best results apply at or just prior to the anticipated time of hatching of <i>Helicoverpa</i> eggs as indicated by egg levels or scouting. As earlier larval stages are easier to control, DO NOT target larvae larger than 5 mm (very small to small). Large larvae and larvae feeding within bolls and squares may not be controlled. Larvae must feed on treated areas in order to achieve effective control. Where high egg lays occur the addition of an ovicide is recommended. Use the lower rate on light infestations. Make no more than 4 applications per season. CUTTER 112 EC™ should be used according to the cotton Best Management Practices Manual. Applications of CUTTER 112 EC™ as outlined above for <i>Heliothis</i> will reduce the rate of mite development in treated cotton.
Ornamentals & Vegetable	Prodenia Thrips Leaf miners	250 ml/Ha	3 days	Spraying also helps in reducing red mites

**Pre harvest interval:** 3 days

**Toxicology profile:**

**Acute oral:** LD50 for rats >2000 mg/kg

**Acute dermal:** LD50 for rats >5000 mg/kg

**Acute inhalation:** LC50 (4h) for rats >3.18 mg/l

**Skin and eye irritation:** No irritant to skin and mild irritant to eyes.

**Class:** WHO(a.i.) II.

**Ecotoxicology:**

LC50 for chicken is >3000mg/kg body weight.

LC50 for freshwater fish is 12.6 mg/L of water.

LD50 for bees is 0.001% v/v.

LC 50 (14 days) for *Eisenia foetida* > 2500 mg/kg soil.



Leaf Miner

**First aid measures:**

If poisoning is suspected, immediately contact a physician, the nearest hospital, or the nearest Poison Control Center. Tell the person contacted the complete product name, and the type and amount of exposure. Describe any symptoms and follow the advice given.

**Ingestion:** Immediately call a poison control center or doctor for treatment advice. Do not induce vomiting unless directed to do so by a physician or poison control center. Have a person sip a glass of water if able to swallow. Do not give anything by mouth to an unconscious person.

**Eye Contact:** Hold eye open and rinse slowly and gently with water for 15-20 minutes. Remove contact lenses, if present, after the first 5 minutes, then continue rinsing eye. Call a poison control center or doctor for treatment advice.

**Skin Contact:** Take off contaminated clothing. Rinse skin immediately with plenty of water for 15-20 minutes. Call a poison control center or doctor for treatment advice.

**Inhalation:** Move person to fresh air. If person is not breathing, call an ambulance, then give artificial respiration, preferably mouth-to-mouth if possible. Call a poison control center or doctor for further treatment advice.

**Stability in storage:** Minimum 2 years when stored under normal conditions. Store in original packaging. Read the label carefully and use the product accordingly. Use pesticide safety.

**Please Note :**

1. This product must be used strictly as directed and in accordance with all instructions appearing on the label.
2. Do not apply through any type of irrigation system.
3. Do not apply at rates lower than those recommended on this label.
4. Do not make more than 2 sequential applications without rotating to another product with a different mode of action.
5. Do not apply following a field failure of another product if larvae are large (>1/4 inch in length).
6. Allow a minimum of 5 days between applications.

**Disclaimer:** This information and all further technical advice is based on our present knowledge and experience and approvals from the registration. This information and all further technical advice is based on our present knowledge and experience and approvals from the registration authorities. However, it implies no liability or other legal responsibility on our part, including with regard to existing third party intellectual property rights, especially patent rights. In particular, no warranty, whether express or implied, or guarantee of product properties in the legal sense is intended or implied. We reserve the right to make any changes according to technological progress or further developments. In the event of any discrepancies between the information stated herein or any other information source and the information stated on the label of the product, the information stated on the label of the product will prevail. The customer is not released from the obligation to conduct careful inspection and testing of incoming goods. Performance of the product described herein should be verified by testing, which should be carried out only by qualified experts in the sole responsibility of the customer. Reference to trade names used by other companies is neither a recommendation, nor does it imply that similar products could not be used.