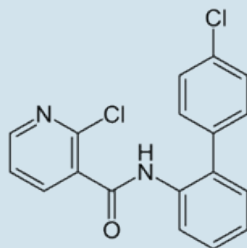


Alvarion™ 50 WDG

A systemic and contact fungicide for use against Powdery mildew, Rust, Anthracnose, Cercospora, Purple blotch, Early blight and Botrytis on a wide range of crops.

Active Ingredient: Boscalid 50%

Boscalid:



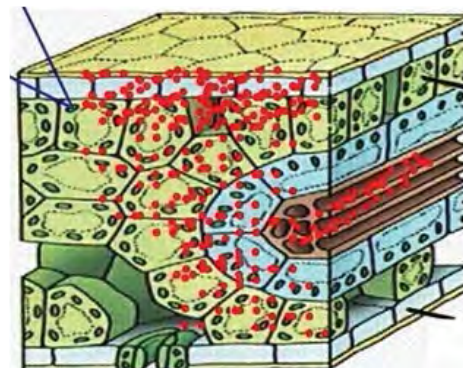
- > SDHI - Succinate dehydrogenase inhibitor fungicide
- > Mode of Action: Boscalid is systemic, absorbed by the foliage, protective and curative fungicide. Boscalid inhibits spore germination and germ tube elongation.
- > FRAC Code: 7
- > Target Site and Code: C2: Complex II - succinate-dehydro-genase

Alvarion 50 WDG™ is a novel, modern fungicide to protect the yield from a wide range of diseases.

Boscalid is a broad spectrum systemic fungicide with protective and curative action.

Boscalid is plant, with translocation acropetally. is absorbed rapidly by the Boscalid is used as a foliar, fungicide.

Boscalid is highly effective for the control of Alternaria blight, Botrytis, Powdery Mildew, Purple Blotch, Rust, Leaf spot, Grey mould and Stem rot in a wide range of crops including vegetables and ornamentals.



Alvarion 50 WDG™ Systemic Activity

Contact / protectant: **Alvarion 50 WDG™** attaches to the leaf surface and stops the disease before it has a chance to damage the leaf.

Translaminar movement: After application, **Alvarion 50 WDG™** is rapidly transported through the leaf to deliver full protection to both the sprayed and unsprayed surfaces of the leaf.

Leaf Systemicity: **Alvarion 50 WDG™** moves systematically within the leaf itself to spread protection to every part of the leaf and also provides control of any disease already present beneath the leaf surface.

Supplier:



Sineria Holland BV
Randwycksingel 20 - A015
6229 EE Maastricht, The Netherlands
www.sineria.com

Control - Tomato plants



Tomato plants treated with Alvarion 50 WDG™

Control - Onion plants



Onion plants treated with Alvarion 50 WDG™

Disclaimer: This information and all further technical advice is based on our present knowledge and experience and approvals from the registration authorities. However, it implies no liability or other legal responsibility on our part, including with regard to existing third party intellectual property rights, especially patent rights. In particular, no warranty, whether express or implied, or guarantee of product properties in the legal sense is intended or implied. We reserve the right to make any changes according to technological progress or further developments. In the event of any discrepancies between the information stated herein or any other information source and the information stated on the label of the product, the information stated on the label of the product will prevail. The customer is not released from the obligation to conduct careful inspection and testing of incoming goods. Performance of the product described herein should be verified by testing, which should be carried out only by qualified experts in the sole responsibility of the customer. Reference to trade names use by other companies is neither a recommendation, nor does it imply that similar products could not be used.

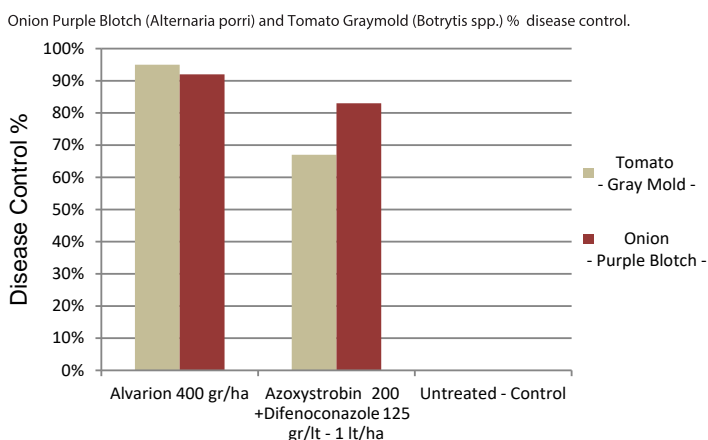
Alvarion 50 WDG™ - Characteristics & Advantages

- Excellent protective and curative action against a wide range of diseases.
- Prevents fungal sporulation, disrupting the biological cycle of the fungi and preventing secondary infestations.
- Systemic and translaminar properties
- Rapid uptake and distribution
- Excellent rain fastness
- Long lasting, residual protection.
- Ensures enhanced yield quantity and quality.

Field Trials

Extensive field trials and commercial applications have proven the efficacy of **Alvarion 50 WDG™** against a wide range of diseases. In Belgium (2015) **Alvarion 50 WDG™** was tested for the control of Purple Blotch (*Alternaria porri*) in Onions and Graymold (*Botrytis* spp.) in Tomatoes.

The results are depicted in the following graph:



Rate of application

Crop	Disease	Application Rate
Potato	Alternaria (Early blight), Botrytis, Sclerotinia white mould	400 - 700 gr/ha
Tomato, Pepper, Celery, Cucurbits	Botrytis Graymold, Alternaria (Early blight)	400 - 700 gr/ha
Soyabean, Groundnuts	Alternaria (Early blight), Botrytis, Sclerotinia White Mould, Late Leaf Spot (<i>Cercospora</i>), Phoma Wet Blotch	400 - 700 gr/ha
Onions, Garlic	Botrytis, Powdery Mildew, Purple, Blotch (<i>Alternaria</i>), Sclerotinia	350 - 550 gr/ha
Blueberries	Botrytis, Powdery Mildew	60 - 100 gr/ 100 Lt water
Ornamentals	Botrytis, Powdery Mildew, Alternaria (Early blight)	400 - 700 gr/ha
Grapes	Botrytis, Graymold, Powdery, Mildew	80 gr/ 100 Lt water
Peas	Alternaria (Early blight), Botrytis, Sclerotinia White Mould, Late Leaf Spot (<i>Cercospora</i>), Phoma Wet Blotch	400 - 700 gr/ha

Application timing

Directions for use: **Alvarion 50 WDG™** should be mixed with water to be ready for use. It may be applied with any type of spraying equipment.

- Spray **Alvarion 50 WDG™** preventively or in the early stages of the disease development. Ensure thorough coverage of the plants

Supplier:



Sineria Holland BV
 Randwycksingel 20 - A015
 6229 EE Maastricht, The Netherlands
www.sineria.com