

AMDOCS 3 EC

Active Ingredients:

Emamectin benzoate 2% + Abamectin 1%

Mode of Action

The active ingredients, Emamectin Benzoate and Abamectin, have a unique mode of action which is different from any other insecticide. AMDOCS™ interferes with the pests' nervous system and causing them to lose cell function. The larvae stop feeding immediately and die within 2-4 days.

The A.I degrades in a few hours and does not bioaccumulate. Abamectin and Emamectin benzoate are natural fermentation products of soil microorganisms. The product penetrates the plant (translaminary) and its action on the insect is mainly through the digestion system. Abamectin interferes with the insect's nerve system, stimulates the release of GABA and its binding to nerve cells. This action stops the natural impulse and causes a quick paralysis of the insect or the mite. Insects and mites lose the motion ability shortly after exposure to AMDOCS 3 EC™. Mortality takes place 2 to 4 days after spraying.

AMDOCS 3 EC™ is an insecticide and acaricide for the control of a wide range of insect pests and spider mites on a variety of crops

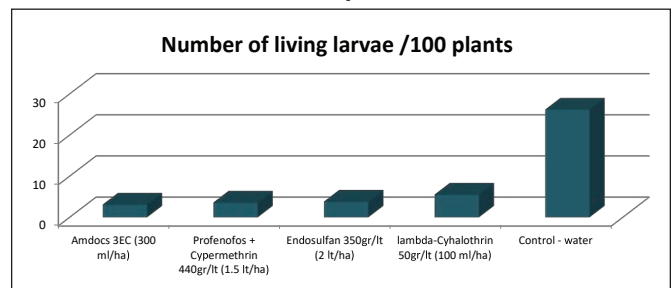
Advantages:

1. Higher safety for workers.
2. Broad spectrum activity.
3. Suitable for many crops.
4. Low toxicity effect on mammals.
5. Safe for crops when used as directed.

◇ AMDOCS 3 EC™ is a natural product formulated from two A.I that are obtained from soil microorganisms with a two fold mode of action.

◇ AMDOCS 3 EC™ is easily absorbed in plant tissues and ingested by larva.

AMDOCS 3 EC™ Field Proven Efficacy



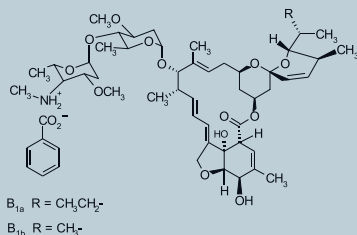
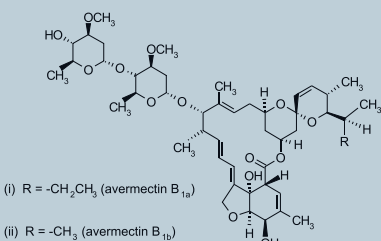
Efficacy of 4 different insecticides on the control of the cotton bollworm (*Helicoverpa armigera*, syn. *Heliothis armigera*) in Cotton plantations.

Common Name:

Emamectin benzoate and Abamectin

Formulation type: EC

Chemical Structure



Toxicological Profile:

Acute oral: LD50 for rats 2872 mg/kg

Acute dermal: LD50 for rats >4000 mg/kg

Acute inhalation: LC50 (4h) for rats >3.21 mg/l

Skin and eye irritation: Mild irritant to skin and irritant to eyes.

Ecotoxicology:

LC50 for chicken is > 2000mg/kg body weight.

LC50 for freshwater fish is 5.23 mg/L of water.

LC 50 (14 days) for Earthworm > 1 000 mg/kg soil.

Disclaimer: This information and all further technical advice is based on our present knowledge and experience and approvals from the registration. This information and all further technical advice is based on our present knowledge and experience and approvals from the registration authorities. However, it implies no liability or other legal responsibility on our part, including with regard to existing third party intellectual property rights, especially patent rights. In particular, no warranty, whether express or implied, or guarantee of product properties in the legal sense is intended or implied. We reserve the right to make any changes according to technological progress or further developments. In the event of any discrepancies between the information stated herein or any other information source and the information stated on the label of the product, the information stated on the label of the product will prevail. The customer is not released from the obligation to conduct careful inspection and testing of incoming goods. Performance of the product described herein should be verified by testing, which should be carried out only by qualified experts in the sole responsibility of the customer. Reference to trade names use by other companies is neither a recommendation, nor does it imply that similar products could not be used.

Application:

Used by foliar spraying. It is important to spray evenly on the crops to get maximum control effects.

Application Rates:

| Crops | Pest | Rate per ha in small volume spraying (300-700 L per Ha) | Last application before harvest | Important comments |
|--|--|---|---------------------------------|--|
| Cotton Wheat Maize | Heliothis, Lapigma, Helicoverpa, Cutworms, Armyworms, Maize Borer | 0.3 L/ha | 1 day | Timing is important. For best results apply at or just prior to the anticipated time of hatching of Helicoverpa eggs as indicated by egg levels or scouting. As earlier larval stages are easier to control, DO NOT target larvae larger than 5 mm (very small to small). Large larvae and larvae feeding within bolls and squares may not be controlled. Larvae must feed on treated areas in order to achieve effective control. Where high egg lays occur the addition of an ovicide is recommended. Use the lower rate on light infestations. Make no more than 4 applications per season. AMDOCS™ should be used according to the cotton Best Management Practices Manual. Applications of AMDOCS™ as outlined above for Heliothis will reduce the rate of mite development in treated cotton. |
| Pepper, Tomato, Sweet, Maize, Soya beans | Spider mites (Two spotted spider mite, Rust mite, Yellow mite), Heliothis, Felosia | 0.3 L/Ha | 1 day | — |
| Ornamentals | Prodenia, Thrips, Lapigma, Cutworms | 0.6 L/Ha | — | Spraying also helps in reducing red mites |
| | Spider mites (Two spotted spider mite, Rust mite, Yellow mite) | 0.5 L/Ha | | |

Pre harvest interval: 1 day

Please Note:

1. This product must be used strictly as directed and in accordance with all instructions appearing on the label.
2. Do not apply through any type of irrigation system.
3. Do not apply at rates lower than those recommended on this label.
4. Do not make more than 2 consecutive applications without rotating with another product with a different mode of action.
5. Allow a minimum of 5 days between applications.