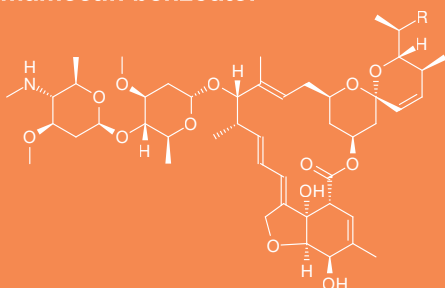




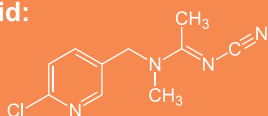
Emamectin benzoate:



Mode of Action:

Emamectin-benzoate is a non-systemic insecticide which penetrates leaf tissues by translaminar movement. It is an insecticide and acaricide with contact and stomach action.

Acetamiprid:



Mode of Action:

- Acetamiprid is a systemic insecticide with translaminar activity and with contact and stomach action.
- Both active ingredients have strong synergy.

Formulation type: EC.

Shelf life: 2 years, under normal conditions.

Active Ingredients:

Emamectin-benzoate 48 g/L + Acetamiprid 64 g/L

Cutter 112EC™ is a broad-spectrum insecticide and acaricide for the control of lepidoptera pests, thrips, leaf miners and spidermites in ornamentals, vegetables, tobacco and broad-acre crops.

Advantages:

- Broad-Spectrum Activity
- Suitable for various crops
- Low Toxicity effect
- Safe for crops if used as directed

Application:

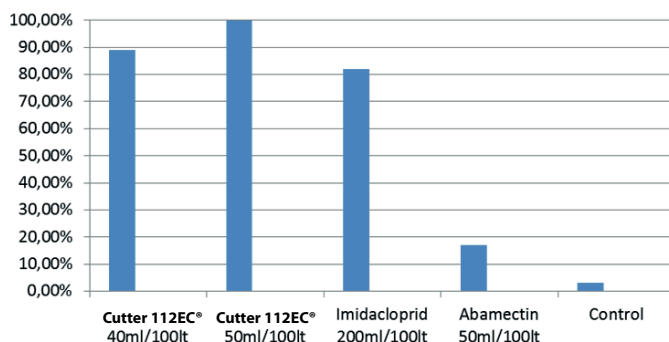
To be used as foliar spray. It is important to evenly spray the crop and to properly cover the foliage in order to get maximum control effect.

Cutter 112EC™ is suitable for use on broad-acre crops, vegetables and ornamentals.

In case of high pest pressure, repeat application at 7-10 days intervals, with no more than 4 applications per growing season.

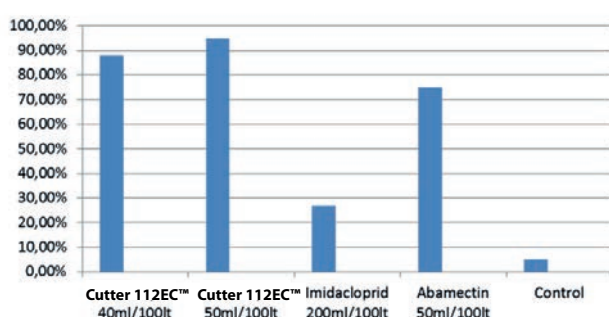
Field Trials on Broad Beans (Greece, 2017):

Efficacy of Cutter 112EC™ on Aphid Control



Aphid infestation in experimental plot during field trials

Efficacy of Cutter 112EC™ on lepidoptera Control



Cutter 112EC™ plot during field trials

Important Note:

The Indicated Crops and Recommended Rate of application on this Product informative sheet may not be applicable in country where the product is intended to be used. User must refer and use the product only as per the officially Register and approved uses by the ministry of Agriculture authorized authorities. The supplier cannot be held responsible or liable if the use of this product is preform on Crops which are not listed on the official label as approved the ministry of Agriculture authorized authorities.

Disclaimer: This information and all further technical advice is based on our present knowledge and experience and approvals from the registration authorities. However, it implies no liability or other legal responsibility on our including with regard to existing third party intellectual property rights, especially patent rights. In particular, no warranty, whether express or implied, or guarantee of product properties in the legal sense is intended or implied. We reserve the right to make any changes according to technological progress or further developments. In the event of any discrepancies between the information stated herein or any other information source and the information stated on the label of the product, the information stated on the label of the product will prevail. The customer is not released from the obligation to conduct careful inspection and testing of incoming goods. Performance of the product described herein should be verified by testing, which should be carried out only by qualified experts in the sole responsibility of the customer. Reference to trade names use by other companies is neither a recommendation, nor does it imply that similar products could not be used.

Cutter 112EC is a trademark from Sineria Kenya Ltd.

Application Rates:

Crop	Pest	Application Rate
Tomatoes, Potatoes, Peas	Spidermites**, Whiteflies, Thrips*, Tuta absoluta	0.3-0.5 Lt/ Ha 10 ml/ 20 Lt of water
Wheat and soybeans	Lepidoptera pest, Cutworms, Armyworms, Leafminers	0.25-0.5 Lt / Ha 10-15 ml/ 20 Lt water
Roses	Aphids, Caterpillars**, Whiteflies, Spidermites**, Thrips *	0.35 Lt / Ha 10 ml/ 20 Lt of water
Tobacco	Aphids, Thrips*, Leafminers, Lepidoptera pests	0.25-0.5 Lt / Ha 10-15 ml/ 20 Lt water
Barley, Maize	Fall armyworms, Lepidoptera pests, Spider-mites, Thrips	0.5 Lt/ Ha 15-20 ml/ 20 Lt water

* Apply upon first signs of infestation when punctures caused by egg-laying stages are visible.

** Apply upon first signs of infestation and repeat after 7-10 days, as necessary.