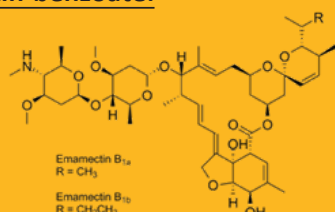


# ENIGMA 200SC

## Active Ingredients:

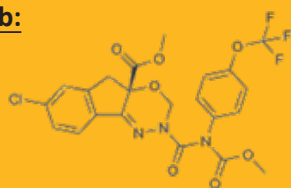
Indoxacarb 160 g/ L + Emamectin-benzoate 40 g/ L

### Emamectin-benzoate:



- Emamectin-benzoate is a natural fermentation product deriving from soil bacteria and has limited systemic activity but will penetrate translaminary the plant tissues to provide residual control.
- **Molecular Formula:** C<sub>49</sub>H<sub>75</sub>NO<sub>13</sub>
- **Mode of Action:** Emamectin-benzoate has a unique mode of action which is different from any other insecticide. Emamectin-benzoate interferes with the pest's nervous system, causing them to lose cell function and stop feeding. The larvae die in 2-4 days.
- **IRAC Group:** 6

### Indoxacarb:



- Indoxacarb belongs to the **Oxidiazine** chemical group.
- Indoxacarb is a new class of chemistry with a new mode of action.
- **Molecular Formula:** C<sub>22</sub>H<sub>17</sub>ClF<sub>3</sub>N<sub>3</sub>O<sub>7</sub>
- **Mode of Action:** Interferes with a group of ion channels by inhibiting the flow of sodium ions into nerve cells.
- **IRAC Group:** 22A

**Insecticide with stomach and contact action for the control of Leafminers, Lepidoptera pests, Thrips and Spidermites on vegetables, ornamentals and broadacre crops.**

**Enigma 200 SC** effectively combines active ingredients with different and highly complementary modes of action.

- Important new tool in resistance management programs.
- Cross resistance to other insecticide groups is highly unlikely to occur.
- Indoxacarb is characterized as a "Reduced Risk and Organophosphate" (OP) Alternative Pesticide" by the EPA-USA

### *What exactly does that mean?*

- Low impact on human health
- Low toxicity to non-target organisms (birds, fish, plants)
- Low potential for groundwater contamination
- Low application rates
- Low pest resistance potential
- Compatibility with Integrated Pest Management practices

### **Enigma 200 SC Advantages:**

- Highly effective
- Novel mode of action (Indoxacarb and Emamectin-benzoate content)
- Stable under adverse environmental conditions
- Broad-spectrum of activity
- Synergistic effect of the 2 Active Ingredients
- Suitable for use on a wide range of crops
- Translaminar action
- Not phytotoxic when used as directed

## Directions for proper use

- Enigma 200SC should be mixed with water to be ready for use.
- It may be applied with any type of spraying equipment.
- Ensure thorough and even coverage of the canopy.



In Colombia, during 2017 and 2018, **Enigma 200 SC** was extensively tested for the control of Tuta absoluta in Tomato.

### Field Trials

Extensive field research has proven the increased efficacy of **Enigma 200 SC**.

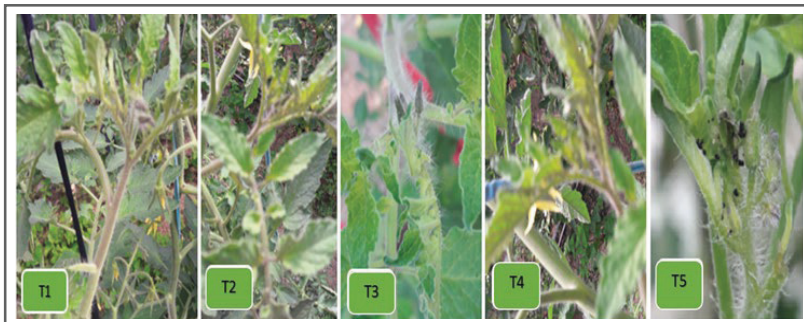
**Disclaimer:** This information and all further technical advice is based on our present knowledge and experience and approvals from the registration authorities. However, it implies no liability or other legal responsibility on our part, including with regard to existing third party intellectual property rights, especially patent rights. In particular, no warranty, whether express or implied, or guarantee of product properties in the legal sense is intended or implied. We reserve the right to make any changes according to technological progress or further developments. In the event of any discrepancies between the information stated herein or any other information source and the information stated on the label of the product, the information stated on the label of the product will prevail. The customer is not released from the obligation to conduct careful inspection and testing of incoming goods. Performance of the product described herein should be verified by testing, which should be carried out only by qualified experts in the sole responsibility of the customer. Reference to trade names use by other companies is neither a recommendation, nor does it imply that similar products could not be used.

## Rate of Application:

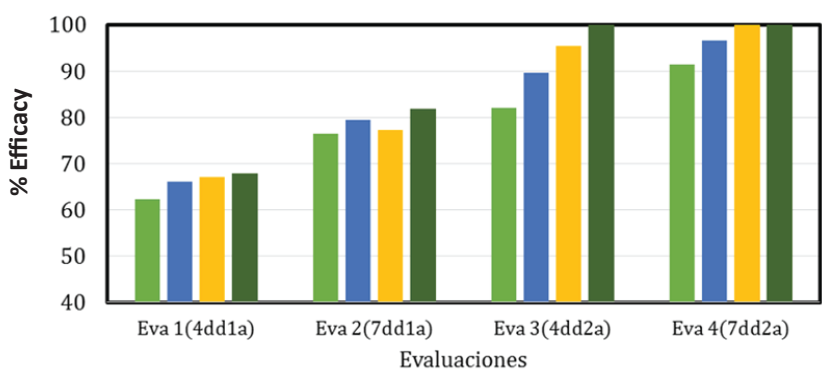
Crop	Pests	Application Rate
Vegetables	Leafminers, Lepidoptera pests, Thrips, Spidermites	0.2-0.3 L/Ha
Soybeans	Leafminers, Lepidoptera pests, Thrips, Spidermites	0.2-0.3 L/Ha
Cotton	Leafminers, Lepidoptera pests, Thrips, Spidermites	0.2-0.3 L/Ha
Citrus	Leafminers, Lepidoptera pests, Thrips, Spidermites	0.2-0.3 L/Ha
Ornamentals	Leafminers, Lepidoptera pests, Thrips, Spidermites	0.2-0.3 L/Ha
Tobacco	Leafminers, Lepidoptera pests, Thrips, Spidermites	0.2-0.3 L/Ha
Maize	Leafminers, Lepidoptera pests, Thrips, Spidermites	0.2-0.3 L/Ha

**% Efficacy of Enigma 200SC (Indoxacarb 160 g/L + Emamectin- benzoate 40 g/L) against water-control.**

Photographic treatment comparison:



Treatment	Product	Rate	3	Enigma 200SC	300 ml/Ha
1	Enigma 200SC	100 ml/Ha	4	Enigma 200SC	400 ml/Ha
2	Enigma 200SC	200 ml/Ha	5	Water - Control	-



■ T1. Emamectin-benzoate + Indoxacarb 0.1L/Ha ■ T2. Emamectin-benzoate + Indoxacarb 0.2L/Ha  
■ T3. Emamectin-benzoate + Indoxacarb 0.3L/Ha ■ T4. Emamectin-benzoate + Indoxacarb 0.4L/Ha

- Note that at the label recommend rates, the % Efficacy was up to 100%!