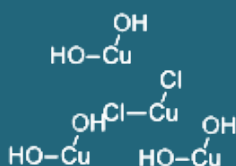


## Metacop

### Copper Oxychloride:



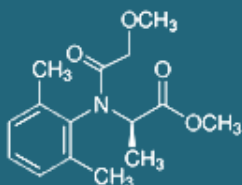
A protectant, copper based, fungicide and bactericide used as a foliar spray.

**Mode of Action:** Interfering with the enzyme system of spores and mycelium, a process which is usually irreversible. Copper oxychloride forms a chemical barrier against fungal attack and is a foliar fungicide with preventative action.

FRAC Code: M1

Multi-site contact activity

### Mefenoxam:



Phenyl-amides fungicide  
Mode of Action: Systemic fungicide that acts on the synthesis of the nucleic acids of the fungus, by inhibiting the RNA synthesis.

Target Site and Code: A1 – RNA polymerase I

**Active Ingredient:** *Mefenoxam* 50 g/kg  
+ Copper Oxychloride 400 g/kg

**Metacop 450 WP** is a unique combination of synergetic active ingredient that act as a fungicide/bactericide and provides more copper protection, with less product, at a great price!

**Metacop** is a systemic and contact fungicide/Bactericide, with protective and strong curative properties for use against Downy Mildew, Late blight, Fusarium and Coffee berry disease on Tomatoes, Potatoes and Coffee.

### **Application timing**

**Directions for use:** Metacop 450WP should be mixed with water to be ready for use. It may be applied with any type of spraying equipment.

- Spray **Metacop 450WP** preventively or in the early stages of the disease development. Ensure thorough coverage of the plants.
- Do not make more than 2 consecutive sprays to prevent resistance development.
- Always alternate with fungicides with a different mode of action through the season

**3-fold Action:** Contact and protective fungicide, with systemic and translaminar activity.

#### Main Advantages of Metacop 450WP

- As a protective and curative fungicide with its fine particles forms a barrier between the plant and the fungi
- As a contact fungicide, it has direct action on the pathogen itself.
- As a systemic fungicide has curative and lasting residual action.
- Prevents fungal sporulation, disrupting the biological cycle of the fungi and preventing secondary infestations
- Excellent rain fastness
- 8 times more soluble than normal copper

#### Benefits for the Farmer

- Uniform particle size, aiding to uniform coverage upon application and effective disease control.
- Completely suspensible wettable powder formulation
- Slow and controlled release of copper, providing extensive residual protection
- It is applied at low application rates, delivering the expected result
- Very low potential for phytotoxicity
- Good adherence to the crop, making it hard to wash off

#### Important Note

The Indicated Crops and Recommended Rate of application on this Product informative sheet may not be applicable in Kenya .

User must refer and use the product only as per the officially Register and approved uses by the PCPB of Kenya.

The supplier cannot be held responsible or liable if the use of this product is preform on Crops which are not listed on the official labelAs approved by PCPB .

**Disclaimer:** This information and all further technical advice is based on our present knowledge and experience and approvals from the registration authorities. However, it implies no liability or other legal responsibility on our part, including with regard to existing third party intellectual property rights, especially patent rights. In particular, no warranty, whether express or implied, or guarantee of product properties in the legal sense is intended or implied. We reserve the right to make any changes according to technological progress or further developments. In the event of any discrepancies between the information stated herein or any other information source and the information stated on the label of the product, the information stated on the label of the product will prevail. The customer is not released from the obligation to conduct careful inspection and testing of incoming goods. Performance of the product described herein should be verified by testing, which should be carried out only by qualified experts in the sole responsibility of the customer. Reference to trade names use by other companies is neither a recommendation, nor does it imply that similar products could not be used.

#### Rate of application:

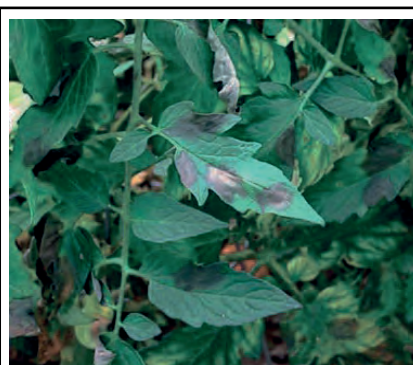
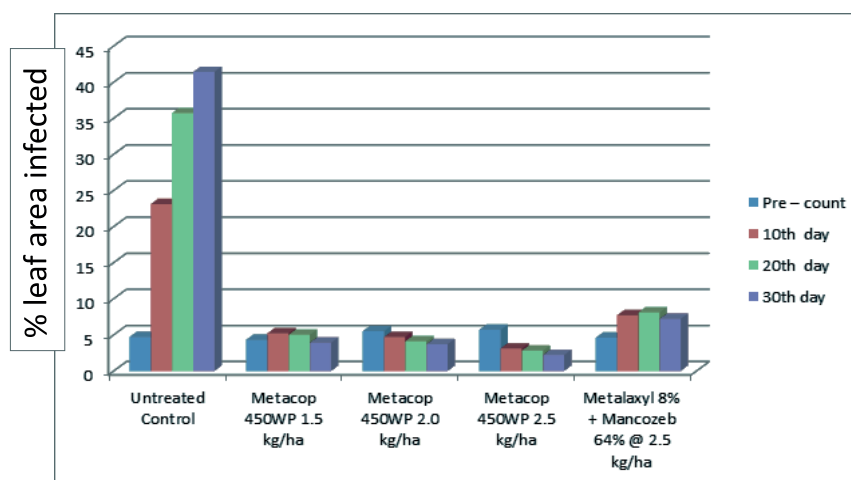
Crop	Disease	Rate per Ha	Rate per 20lt of water
Potato, Peppers	Downy Mildew, Late blight, Fusarium	1.5 - 2.0 kg/ha	40 gr/20lt of water
French beans, Peas	Downy Mildew, Late blight, Fusarium, Rust	1.5-2.5 kg/ha	40-50 gr/20lt of water
Onions, Garlic	Downy Mildew, Purple blotch, Fusarium	2 kg/ha	40 gr/20lt of water
Coffee	Leaf rust, Coffee berry disease	2-3 kg/ha	40-60 gr/20lt of water
Roses	Downy mildew, Late blight	2 kg/ha	40 gr/20lt of water
Tomato	Early and Late blight, Downy mildew	1.5 kg/ha	30 gr/20lt of water
	Bacterial Wilt	2 kg/ha	40gr/20lt of water

#### Field Trials

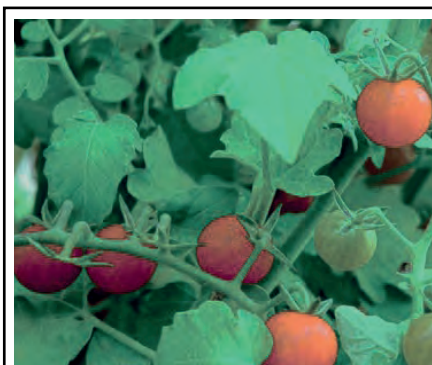
Extensive field trials and commercial applications have proven the efficacy of Metacop 450WP against a wide range of diseases.

**In the Netherlands (2016) Metacop 450WP was tested for the control of Downy Mildew in Tomatoes.**

The results are depicted in the following graph:



Untreated control



Tomatoes treated with Metacop 450WP

Supplier:

**Sineria**

SINERIA Holland BV  
Randwycksingel 20-A015  
6229 EE Maastricht,  
The Netherlands  
www.sineria.com